

TECHNICAL DATA

Series NOL automatic oil burners Models NOL20/NOL25

The Nu-way NOL20 and NOL25 pressure jet burners are designed to meet the requirements of all international markets and have a maximum output of 732 kW (625,000 kcal/h=2,500,000 Btu/h). Available for high/low operation only, they are able to fire at reduced thermal output, appliances having resistances as listed under the burner selection chart. The units can also fire appliances having a maximum draught in the combustion chamber of 125 Pa (12mm wg=0.5 in wg.)

AIR REGULATION

Hydraulically operated damper for high/low operation. Burner fitted with patented air control device producing smooth starting conditions.

CONTROLS

Flame supervision by photo-electric cell with the option of thermal or synchronous sequence controllers to comply with relevant standards. The NOL20/25 burners may be controlled by suitable thermostats, time switches, etc.

FUEL

Light distillate oil Class D (1.5-5.5 cSt @ 40°C).

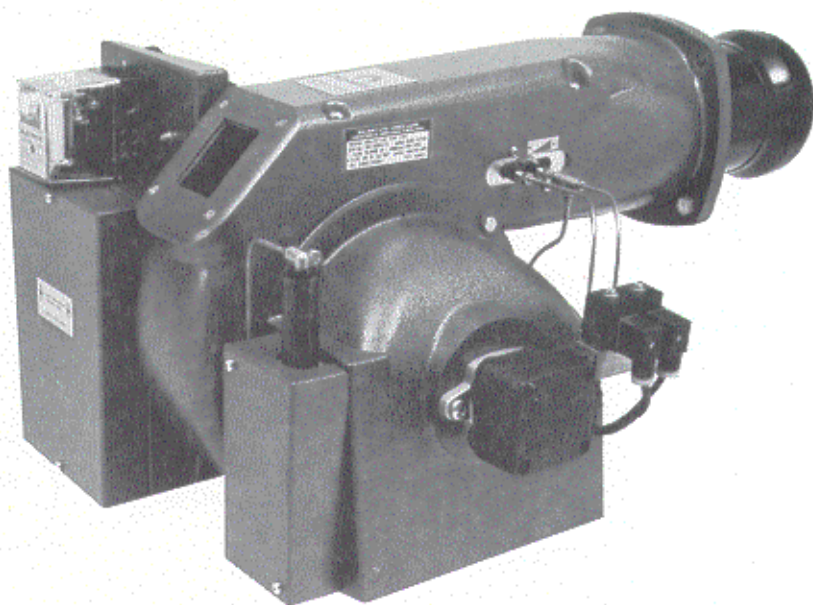
BURNER OUTPUTS

Based upon Gross CV of 45.5 MJ/kg.

FUEL SYSTEM

Suitable for single pipe gravity or two pipe systems. Twin nozzle operation with turndown of 1.5:1 up to 381 kW and 2.0:1 above. Fuel filter and flexible oil pipe are supplied having a fuel connection 1/4" BSP female thread.

For fuel storage and handling temperature requirements please consult the Burner Manual.



CONSTRUCTION (C4)

Monobloc metric design using fasteners to ISO standards. Designed for flange mounting. Fan and inner assembly accessible by removal of top cover plate. Adjustable burner head maintains high air velocity and gives maximum combustion efficiency throughout burner range.

APPROX. WEIGHT

36 kg.

ELECTRICAL DATA

| | 1 phase | 3 phase |
|--|---------|---------|
| Main Supply (V) ± 10% | 230 | 415 |
| Frequency (Hz) | 50 | 50 |
| Motor (W) | 750 | 750 |
| (HP) 2 Pole | 1.0 | 1.0 |
| Burner Start Current (A) | 22 | 9 |
| Main Fuse (A) | 15 | 6 |
| Ignition by direct spark from 10 kV transformer, secondary winding centre earth connected. | | |

MODEL

NOL20 NOL25

ORDERING INFORMATION

When ordering Nu-way NOL burners please specify the following information to expedite your order:

Type of appliance with which the burner is to be used.

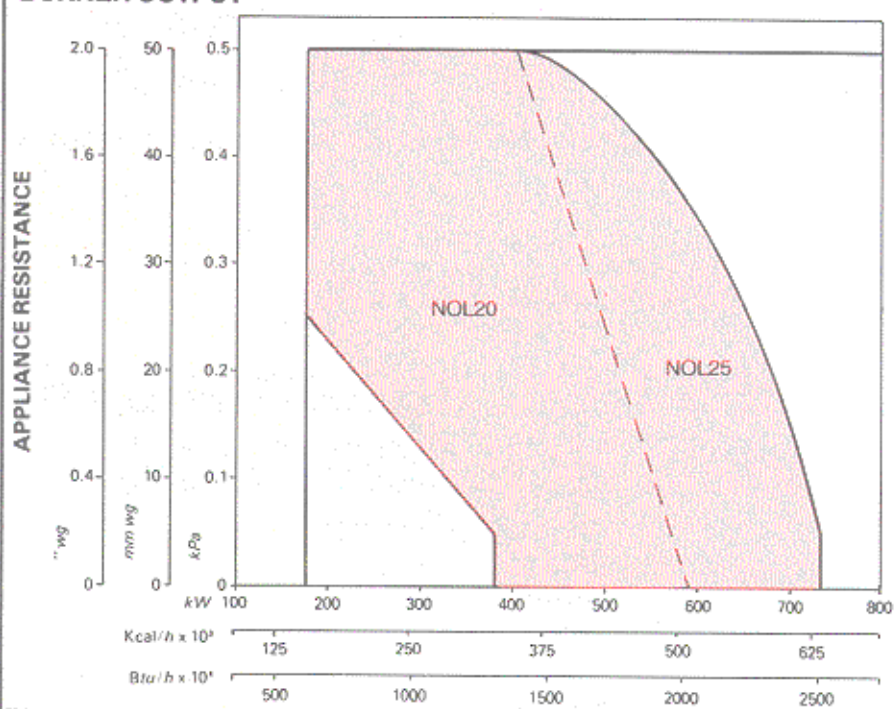
Appliance rating and resistance.

Specification of electrical supply locally available, i.e. voltage, frequency and whether single or three phase (3 or 4 wire).

Fuel viscosity.

NB Burners to operate on electrical supplies other than those quoted

BURNER OUTPUT

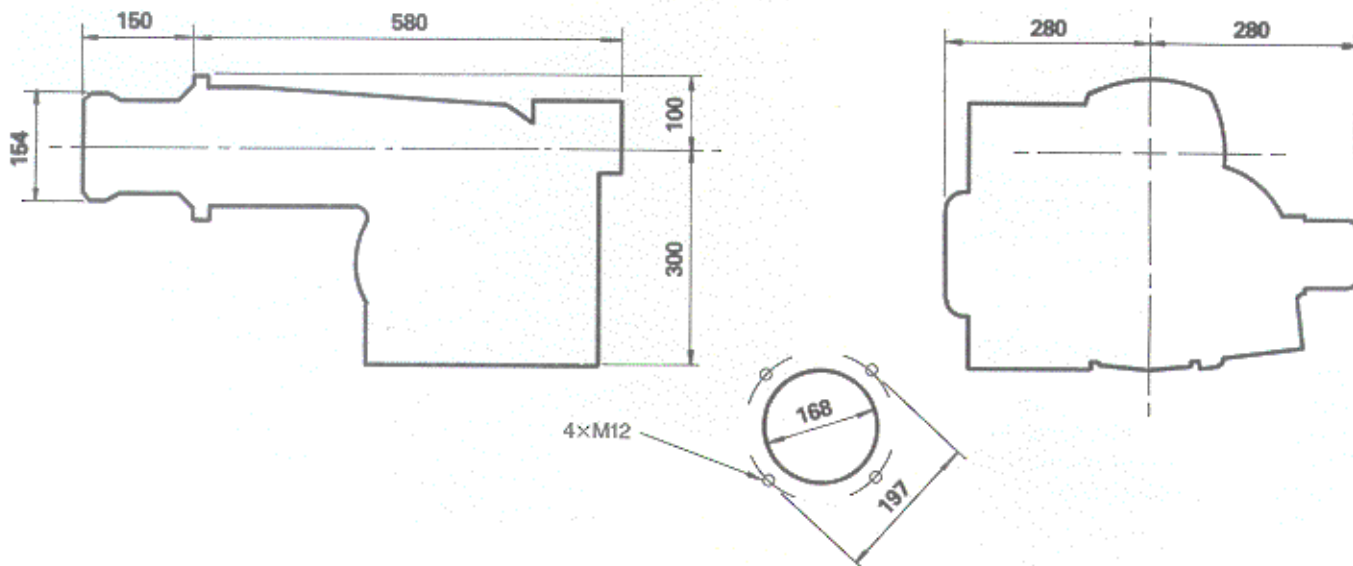


BURNER OUTPUT (GROSS)

BURNER OUTPUTS SHOWN ARE BASED UPON AN AIR TEMPERATURE OF 20°C AND AN ALTITUDE OF 500m

DIMENSIONS

All dimensions are in mm's.



TYPICAL BURNER DESIGNATION

NOL 20 T3S 150

FULL BURNER DESIGNATION — NOL20-NOL25

BURNER TYPE NO L (20/25) (T) (1/3) (D / L / S) 150
 OIL TYPE _____
 NOMINAL OUTPUT (in 100,000's Btu/hr) _____
 OPERATION _____
 ELECT. SUPPLY (1PH) _____
 CONTROL MAKE _____
 PROJECTION _____

NU-WAY

NU-WAY LIMITED, P.O. Box 1, Vines Lane, Droitwich, Worcs. WR9 8NA, England.
 Tel: Droitwich (01905) 794242 (Direct Dial) & 794331
 Telex: 338551 Nuway G & 339868 Nuway G
 Facsimile: (01905) 794017 & Spares (01905) 795829

WOLSELEY plc
 A member of the Wolseley plc Group

Nu-way policy is one of continuous improvement. The right to change prices and specifications without notice is reserved.



NL 007

ISSUE 5/95