

TECHNICAL DATA

Series NOL fully automatic oil burners Models NOL13/NOL16

BURNER CAPACITY

The Nu-way NOL13 and NOL16 pressure jet burners are designed to meet the requirements of all international markets, and have a maximum output of 333 kW on/off burners and 346 kW high/low burners. The NOL13 is able to fire, at reduced thermal output, appliances having resistances as listed under the burner selection chart. The units can also fire appliances having a maximum draught in the combustion chamber of 10 Pa (1 mm wg: 0.04 in wg) at full appliance rating.

AIR REGULATION

Adjustable air trimming damper for on/off operation: hydraulically actuated for high/low control. Burner fitted with patented air control device producing smoother starting conditions.

CONTROLS

Flame supervision by photo-electric cell with sequence controller to comply with relevant standards. The NOL13/16 burners may be controlled by suitable thermostats, time switches, etc.

FUEL

Light distillate oil Class D (1.5-5.5 cSt @ 40°C). Burner outputs based upon Gross CV of 45.5 MJ/kg.

FUEL SYSTEM

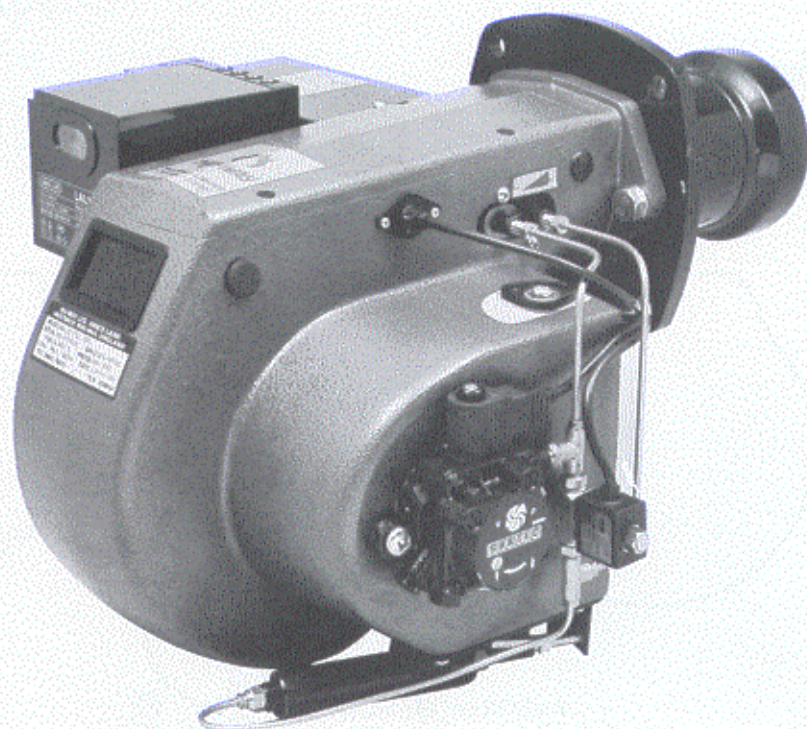
Suitable for single pipe gravity or two pipe suction lift oil supply systems. For fuel storage and handling temperature requirements please consult the Burner Manual.

CONSTRUCTION

Monobloc metric design using fasteners to ISO standards. Removable coverplate for easy access to fan and inner assembly. Adjustable burner head maintains high air velocity and gives maximum combustion efficiency throughout burner range.

APPROX. WEIGHT

20.5 kg.



OPTIONAL EXTRA FEATURE

This burner can be supplied with fully closing air control, at extra cost.

ELECTRICAL DATA

	1 phase	3 phase
Main Supply (V)±10%	230	400
Frequency (Hz)	50	50
Motor (W)	250	250
(HP) 2 Pole	0.33	0.33
Burner Start Current (A)	7.0	3.5
Main Fuse (A)	10	5

MODEL

NOL13 NOL16

ORDERING INFORMATION

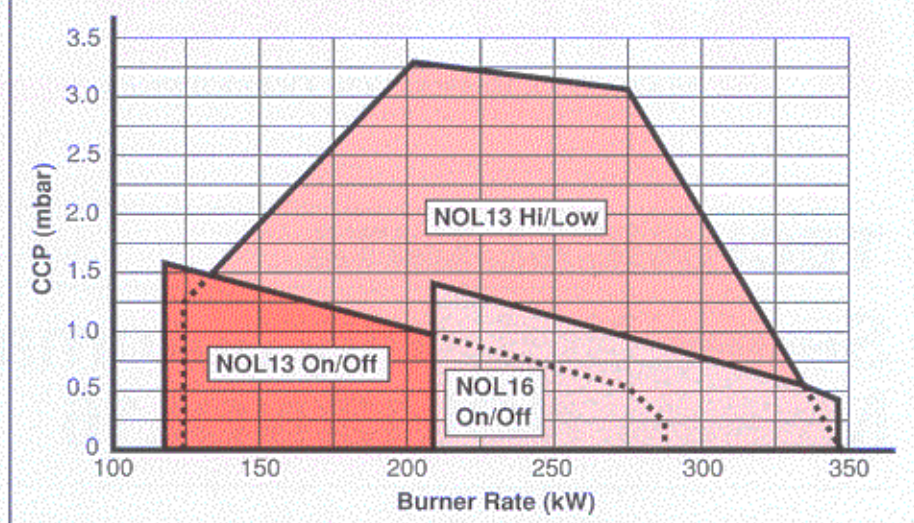
When ordering a Nu-way type NOL burner please specify the following information to expedite your order:

Type of appliance with which the burner is to be used.

Appliance rating and resistance.

Specification of electricity supply locally available, i.e. voltage, frequency and whether single or three phase (3 or 4 wire).

BURNER SELECTION CHART

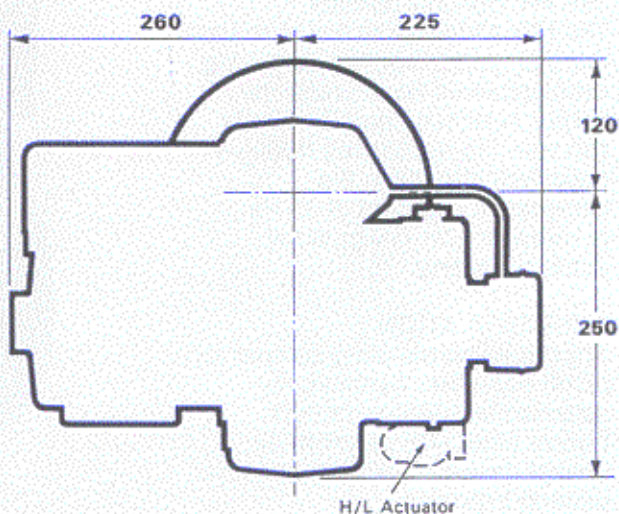
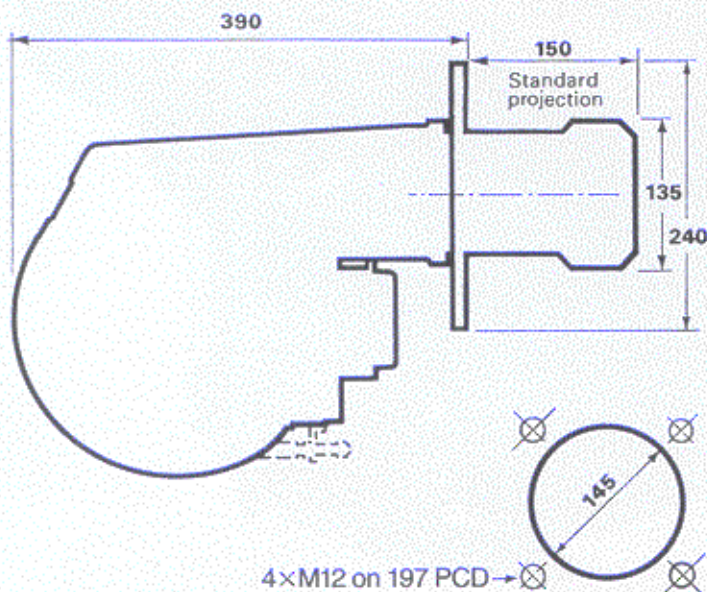


BURNER OUTPUT (GROSS)

BURNER OUTPUTS SHOWN ARE BASED UPON AN AIR TEMPERATURE OF 20°C AND AN ALTITUDE OF 500m

DIMENSIONS

All dimensions are in mm's.



FULL BURNER DESIGNATION - NOL13-NOL16

BURNER TYPE	NO	(L)	(13/16)	(S/T)	(1/3)	(D / L / S)	150
OIL TYPE							
NOMINAL OUTPUT (in 100,000's Btu/hr)							
OPERATION							
ELECT. SUPPLY (1PH)							
CONTROL MAKE							
PROJECTION							

TYPICAL BURNER DESIGNATION NOL 16 S3L 150



Nu-way Limited, P.O. Box 1 Vines Lane, Droitwich, Worcestershire, WR9 8NA, England.

Tel: Droitwich (01905) 794242 (Direct Dial) & 794331

Facsimile: (01905) 794017 & Spares (01905) 795829

Email: info@nu-way.co.uk

Nu-way policy is one of continuous improvement. The right to change prices and specifications without notice is reserved



BS EN ISO 9001
CERT No. FM00921

Issue 8/98